

ThermAir Burners

Model TA500 *version 1.00*

Main Specifications - TA500

| PARAMETER | | SPECIFICATIONS | |
|---|--|--|--------------|
| | | English | Metric |
| Maximum input (To maintain 15% excess air with the standard air orifice and standard combustion air blower.) | 60 Hz packaged blower | Capacity @ Chamber Pressure BTU/hr @ "w.c. kW @ mbar | |
| | | 5,277,000 @ -1.0 | 1,547 @ -2,5 |
| | | 5,000,000 @ 0.0 | 1,467 @ 0,0 |
| | | 4,773,000 @ 1.0 | 1,400 @ 2,5 |
| Minimum input | Natural Gas, Propane or Butane | BTU/hr | kW |
| | | 167,000 | 49 |
| Main gas inlet pressure • fuel pressure at gas inlet (Tap "B") | Natural Gas | 8.2 "w.c. | 20 mbar |
| | Propane | 8.6 "w.c. | 21 mbar |
| | Butane | 8.7 "w.c. | 21 mbar |
| High fire flame length • measured from the burner flange. | Natural gas | 120 in | 3050 mm |
| | Propane | 130 in | 3300 mm |
| | Butane | 135 in | 3430 mm |
| Maximum chamber temperature | Alloy Tube | °F | °C |
| | | 1500 | 815 |
| Flame detection | UV scanner only | | |
| Fuel | Natural Gas, Propane or Butane. <i>For any other mixed gas, contact Eclipse Combustion for orifice sizing</i> | | |

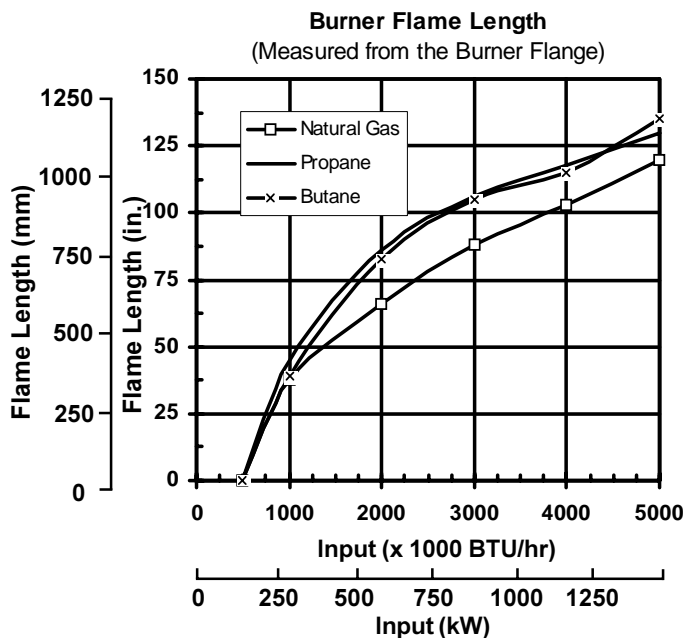
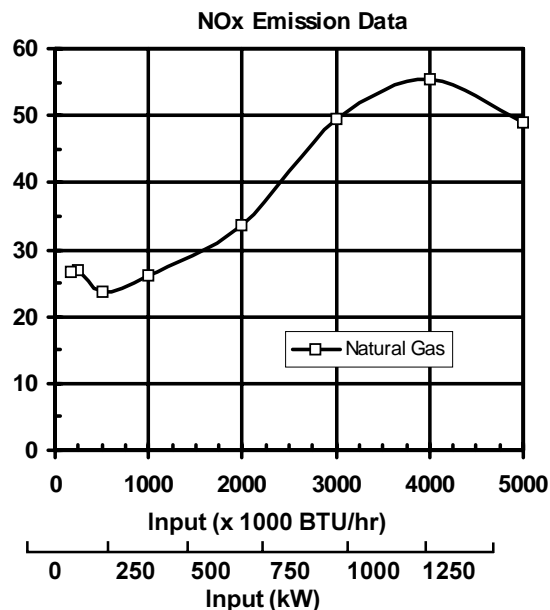
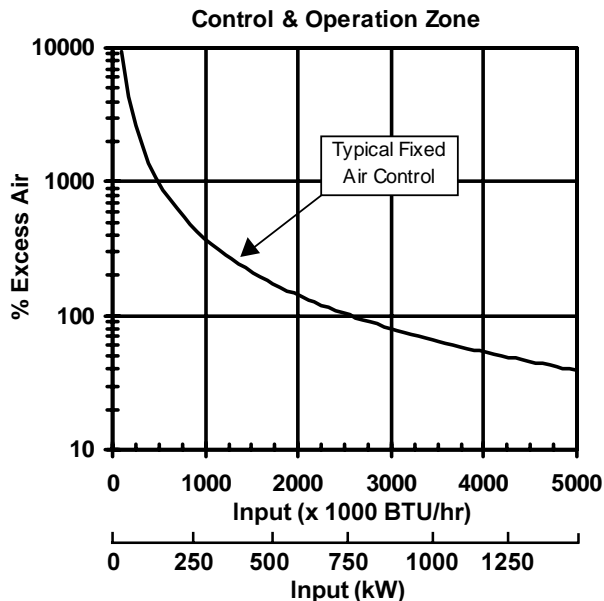
- All information is based on laboratory testing in neutral (0.0"w.c.) chamber with standard combustor design. Different chamber conditions and/or combustor design will affect the data.
- Maximum inputs are given for the standard combustion air blower without an air filter.
- All inputs based upon gross calorific values and standard conditions: 1 atmosphere, 70° F (21°C).
- Blower motor service factors greater than 1.0 may be required when firing into negative chamber pressure applications. For specific application questions, contact your Eclipse Combustion representative.
- Eclipse reserves the right to change the construction and/or configuration of our products at any time without being obliged to adjust earlier supplies accordingly.



Eclipse Combustion

ISO 9001 Registered

Performance Graphs ThermAir TA500



Notes on emission data

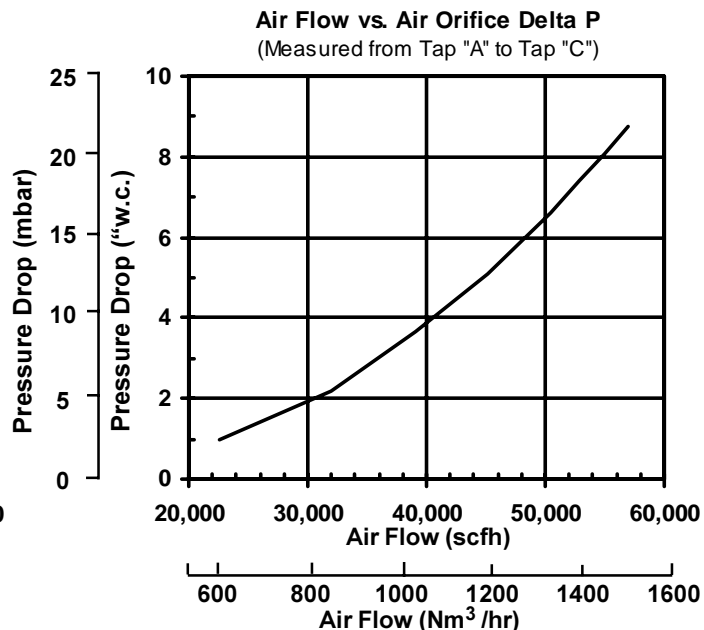
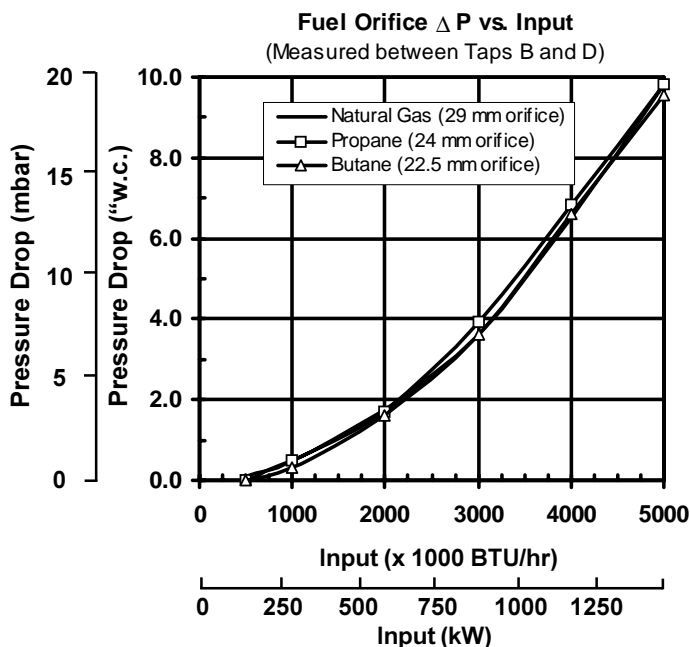
NOx emission data is given for:

- Ambient combustion air ~70° F (20° C)
- Minimal process air velocity
- ppm volume dry at 3% O₂
- Neutral chamber pressure

Emissions are influenced by:

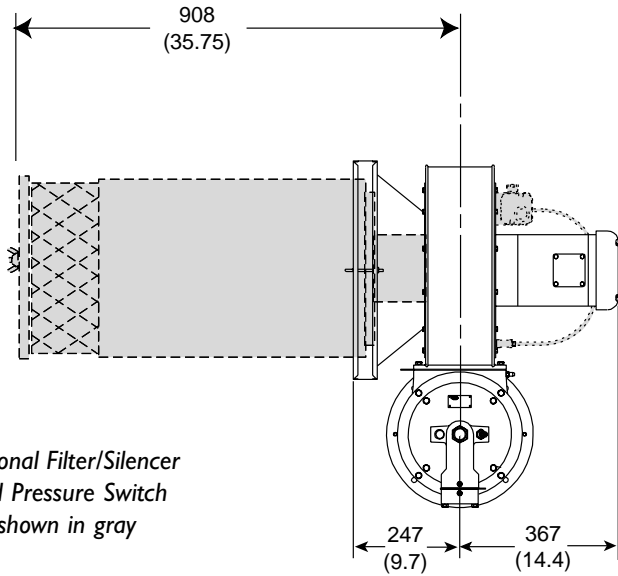
- Chamber conditions
- Fuel type
- Firing rate
- Combustion air temperature

CO emission is largely influenced by chamber conditions. Contact your local Eclipse Combustion representative for an estimate of CO emission on your application.

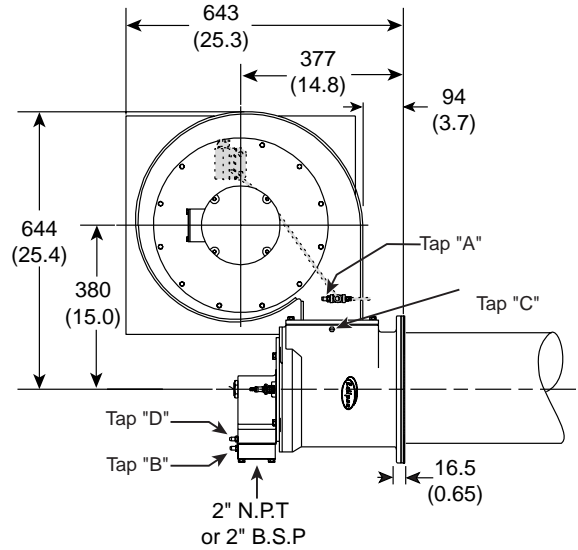


Dimensions-TA500

mm (in)

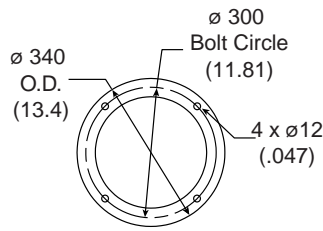


Optional Filter/Silencer and Pressure Switch shown in gray

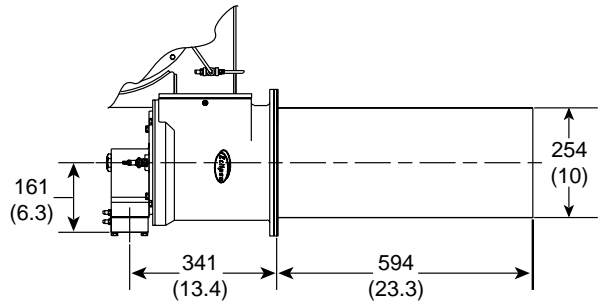


| Port Connections | |
|---------------------|----------|
| Sparkplug | 14mm |
| Flamerod or Scanner | 0.5" NPT |
| Peepsight | 1" NPT |

| Weights | lb | kg |
|---------------------|-----|----|
| Burner, w/ blower | 196 | 89 |
| Burner, less blower | 95 | 43 |
| Filter/Silencer | 52 | 24 |

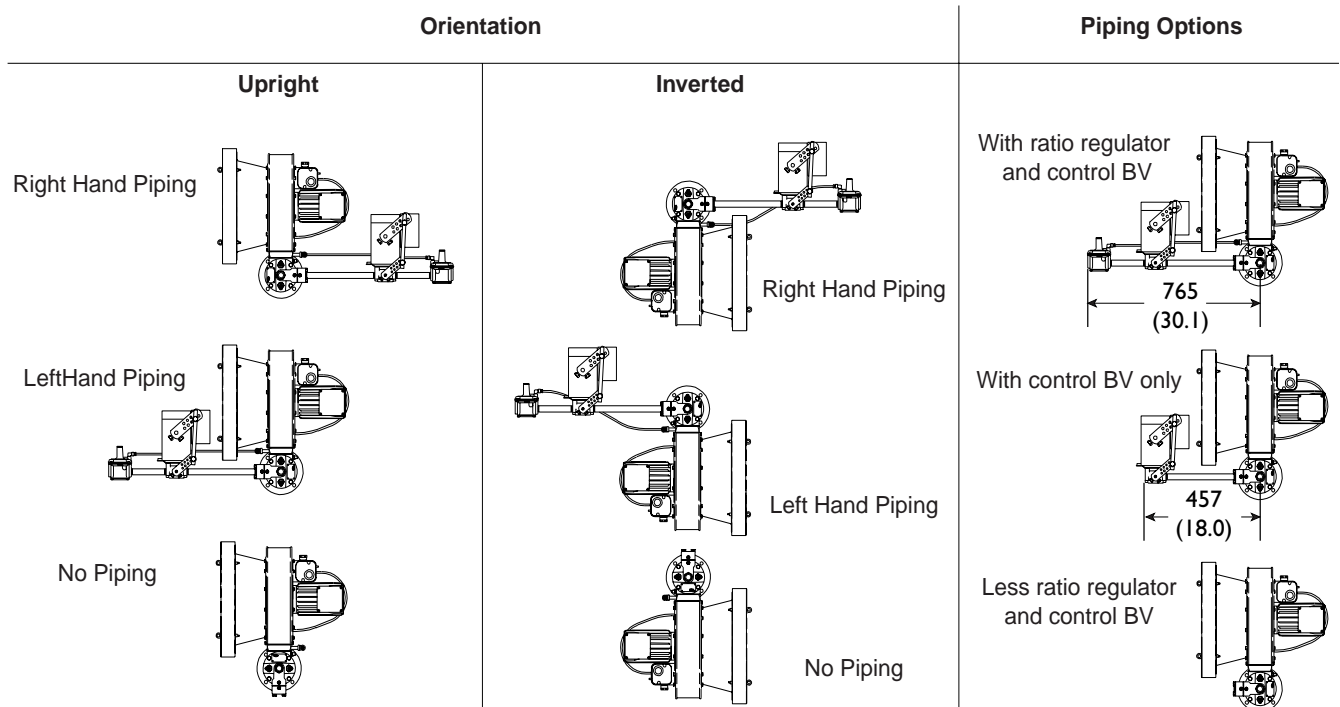


Mounting Pattern



310 Stainless Steel Alloy Tube

Piping





Offered By:

Power Equipment Company
2011 Williamsburg Road
Richmond, Virginia 23231
Phone (804) 236-3800
Fax (804) 236-3882

www.peconet.com